

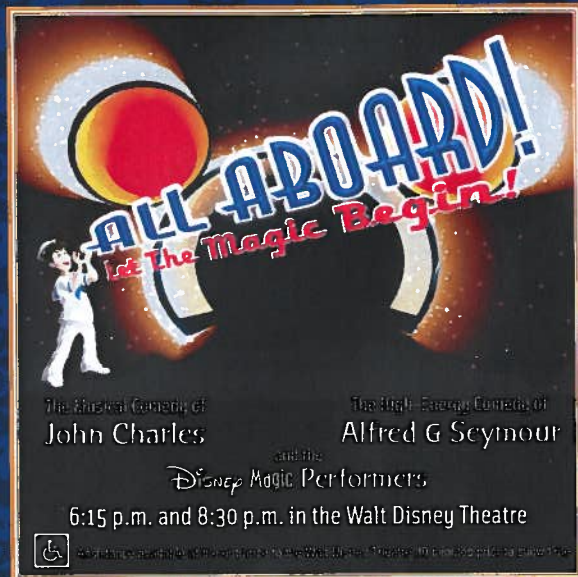
# Disney MAGIC

## PERSONAL NAVIGATOR

PORT CANAVERAL: SATURDAY, DECEMBER 4, 2010

Sunrise: 7:01 a.m. Sunset: 5:23 p.m. Evening Attire: Cruise Casual

All Aboard: 3:45 p.m. Port Departure: 5:00 p.m.



### UPON ARRIVAL

#### • YOUR STATEROOM AND LUGGAGE

Staterooms will be ready at 1:30 p.m. To allow stateroom hosts to prepare your room, please do not remove the blue stanchion straps. Stateroom hosts will deliver luggage throughout the day until 5:30pm.

#### • STATEROOM SAFE

Each stateroom is equipped with a secured storage safe. Instructions for use are located on the safe.

#### • TO CHANGE DINING ASSIGNMENT

Requests for different seating times will be taken today:  
> 12:00 noon - 3:30 p.m., Rockin' Bar D

#### • PALO DINING RESERVATIONS:

Are required and will be taken on a first come basis today at:  
> 12:00 noon - 3:30 p.m., Rockin' Bar D  
> 3:30 p.m. - 5:00 p.m., Leave a voice mail at 7-6843.

#### • DINNER

5:45 p.m. - First Seating; 8:15 p.m. - Second Seating

Please check your dining tickets for details of your dining rotation, and bring them to your specific dining location. There is no need to wait in line prior to dinner. Dining Rooms open at designated seating times and your table is reserved each night of your cruise.

### DON'T MISS...

#### WALKING SHIP TOUR

2:30 p.m., meet at Deck 10, Forward elevators

Enjoy the beauty of the Disney Magic with your Cruise Staff in this guided tour of the ship.

#### KING TRITON'S TREE LIGHTING DECREE

7:30 p.m., Lobby Atrium

Join the Royal Court and some of your Disney friends for this holiday tradition as we light our Christmas Tree.

#### MICKEY MANIA

7:45p.m., Studio Sea

Put your family's Disney knowledge to the ultimate test, or play along from our live studio audience.

#### MATCH YOUR MATE

10:45 p.m., Rockin' Bar D (Guest 18 and Older)

Discover just how well you know, or don't know, your mate! This fun adult game show is always full of surprises.

• SMOKING IS PROHIBITED IN ALL GUEST STATEROOMS. GUESTS FOUND SMOKING IN THEIR STATEROOMS WILL BE CHARGED A \$250 STATEROOM RECOVERY FEE.

• ALL SHIP SERVICES WILL BE SUSPENDED BETWEEN 3:30PM AND 4:30PM DUE TO THE MANDATORY BOAT DRILL.

#### Welcome Aboard!

Your Welcome Aboard photos will be ready for viewing in Shutters Photo Gallery this evening. Please visit Shutters to learn more about our range of latest digital cameras and media. We even have holiday cards available to send to your friends and family back home.



Celebrate your Disney Cruise  
...one photo at a time.

#### Cruise Memories on CD

Order all your cruise photos on a CD for only \$399.95. Plus, save 50% on any photo package. Visit Shutters to learn more.

Conditions apply.



## ADVENTURES AWAY

Earn your status as V.I.P. sailors! Join your Cruise Director Peter, your Disney pals, and your Cruise Staff as we officially begin your "Adventures Away".

4:30 p.m.,  
Goofy's Pool Stage

#### DINNER MENU

Animator's Palate: Show Dinner  
Parrot Cay: Island Dinner  
Lumiere's: French Dinner

#### DRINK OF THE DAY

Malibu Bay Breeze (Alcoholic)  
Mango Crush (Non Alcoholic)

#### WEATHER FORECAST

Saturday: Partly Sunny  
High: 69 F/21 C  
Sunday: Chance of Rain  
High: 75 F/24 C

#### IMPORTANT NUMBERS

Fire / Security 7-3001  
Medical EMERGENCY 7-3000  
Health Center 7-1923



## HOURS OF OPERATION

		PHONE
Flounder's Reef Nursery	12:00 p.m. - 11:00 p.m.	7-5864
Oceaneer Club	12:00 p.m. - 12:00 a.m.	7-1440
Oceaneer Lab	12:00 p.m. - 12:00 a.m.	7-1445
Edge	12:30 p.m. - 12:00 a.m.	7-5816
Vibe	12:30 p.m. - 1:00 a.m.	7-18517



### FLOUNDER'S REEF NURSERY

Deck 5 Midship (7-5864)

Infants and Toddlers can enjoy toys and activities at Flounder's Reef Nursery. Reservations are first come, first served so please stop by!



OCEANEER CLUB  
Deck 5 Midship (7-1440)



OCEANEER LAB  
Deck 5 Midship (7-1445)

## REGISTRATION FOR 3-10 YEAR OLDS

Meet the Youth Activities Team in the Oceaneer Lab and Oceaneer Club, complete your registration & learn all about the Themed Experiences this cruise!



**CLUBHOUSE SERIES** - The Clubhouse Themed Experiences focus on movement and feature content which appeals to younger children. Recommended 7 yrs & younger.



**STORYBOOK SERIES** - The Storybook Series Themed Experiences are designed with a strong connection to the Disney classic stories.



**JUMP UP! SERIES** - The Let's Move! Themed Experiences will include large ground games & movement-oriented activities.



**CREATE & INVENT SERIES** - The Create & Invent Themed Experiences will have a tactile focus allowing children to create and admire their work.



**IN THE SPOTLIGHT SERIES** - The In The Spotlight Themed Experiences focus on children's stage presence with lots of activities and enthusiasm. Recommended 7 yrs & older.



**SOLVE IT! SERIES** - The Solve It! Themed Experiences are less active, but will challenge children with problem/solutions-based activities. Recommended 7 yrs & older.



**OUT AND ABOUT SERIES** - Set outside the designated Youth Activity spaces, The Kids Out and About Themed Experiences provides the opportunity for families to play together. Recommended 8 yrs and older.

### DINE & PLAY

A convenience for families dining at 8:15 p.m., our Youth Activities Counselors will be available at 9:00 p.m. at the entrance of Lumière's, Parrot Cay and Animator's Palate dining rooms to bring registered children to join the fun in the Oceaneer Club and Oceaneer Lab.

## EDGE

### EDGE (11- 13 YEAR OLDS)

Deck 2 Midship (7-5816)

Edge is an interactive play space designed to look like the ship's bridge where kids 11 to 13 years of age can steer a virtual ship, play video games, watch television and participate in arts and crafts with kids their own age.

### WHAT'S NEW IN EDGE

10:00 p.m. Edge

Come and meet your counselors and fellow tweens as we get to know each other and what there is for you to do all week long in Edge.

### THE DOWNLOAD (14-17 YEAR OLDS)

10:30 p.m. Vibe

Come up to Vibe and help plan all the fun activities you will be doing this cruise with your new friends! We'll use our very own Teens-only intranet database, to decide how our week will go!



# FUN FOR THE WHOLE FAMILY

## TALENT SHOW SIGN UP

Let your family take center stage and strut their stuff. Everybody has a talent — it's time to show off yours! Pre-register at the Port Adventures Desk.

## TEA WITH ALICE AND THE MAD HATTER

Be sure to stop by Guest Services to reserve your special pass for one of two opportunities to have tea with Alice and the Mad Hatter. (Limited number available).

## WALKING SHIP TOUR

2:30 p.m., Deck 10, Forward, Elevators

Enjoy the beauty of the Disney Magic® with your Cruise Staff in this guided tour.

## POOLSIDE JAMS WITH TISA AND DJ MATT

2:30 p.m., Goofy's Pool Stage

Start your afternoon off in style as your Club Host, Tisa and DJ Matt spin the tunes.

## ADVENTURES AWAY

4:30 p.m., Deck 9, Goofy's Pool Stage

Earn your status as VIP sailors at this high-energy celebration. Join your Cruise Director, Peter, your Cruise Staff and the Disney Characters as we kick-off the official start to your Adventures Away!

## HANUKKAH SERVICE

5:15 p.m., Rockin' Bar D

With Rabbi Brad Levenberg.

## LIVE MUSIC WITH MIDTOWN

7:30, 9:30 and 10:30 p.m., Promenade Lounge

Our duo, Midtown, play live music for your listening and dancing pleasure.

## FAMILY DANCE PARTY WITH THE RIGHT STUFF

7:30 p.m., Rockin' Bar D

Music fills Rockin' Bar D as The Right Stuff play popular dancing music for our family dance party.

## DISNEY CHANNEL ALL-STARS DANCE PARTY

9:45 p.m., Studio Sea

Hear the hits from some of your favorite Disney Channel stars, including The Jonas Brothers and Hannah Montana.

## DISNEY KARAOKE

10:15 p.m., Studio Sea

Bring the entire family, grab the mic and sing along to your favorite Disney hits.



## CHARACTER APPEARANCES

For detailed Character appearances, please dial 7-PALS. Please check with the character escorts.

To avoid disappointment, please meet at start time of sets.

**ADVENTURES AWAY:** Join some of your favorite Disney Characters today as they celebrate the start of our journey at Adventures Away at 4:30 p.m., Goofy Pool Stage, Deck 9, Midship.

# ADULT EXCLUSIVE ENTERTAINMENT

## PIANO AND VOCAL FAVORITES

7:30, 9:30, 10:30 and 11:30 p.m., Sessions

Pianist Nancy Ruth plays your favorite piano and vocal tunes.

## THE RIGHT STUFF LIVE

9:30 p.m., Rockin' Bar D

Dance to the thrill of LIVE music as The Right Stuff perform.

## COLLEGE CLUB SOCIAL

10:00 p.m., Diversions

Meet other 18 - 21 year olds and plan the rest of your night and cruise.

## MAGIC QUEST

10:15 p.m., Rockin' Bar D

Your Club Host, Tisa, takes you on the wildest scavenger hunt on the high seas.

## MATCH YOUR MATE

10:45 p.m., Rockin' Bar D

Discover just how well you know, or don't know, your mate! This fun adult game show is always full of surprises.

## THE RIGHT STUFF AND DJ MATT

11:15 p.m., Rockin' Bar D

The Right Stuff play romantic melodies for your listening and dancing pleasure, then DJ Matt spins the tunes that will keep you dancing all night long.

# MORE TO ENJOY WHILE ONBOARD

## FINE ART UNVEILING

Save over 50% off Disney animation art, Duaiv, Jozza, Tadeo & more. We ship world wide & all art is duty free back to the USA. Join us at the auctions to receive a FREE print! Art Gallery, Deck 4.



## CAMERA OF THE DAY

Olympus Tough 3000. 12 megapixels, waterproof up to 10 feet, shockproof up to five feet. Limited stocks available. Hurry, get yours now!



## PLAN YOUR NEXT CRUISE

Save 10% off most categories and receive an Onboard Credit for your next cruise by booking while onboard. Visit the Future Cruise Sales Desk, Deck 4, Midship or Call 7- 2848.

## SURF @ SEA

\$0.75 per minute or save money by buying blocks of time. \$55 for 100 minutes, \$100 for 200 minutes and \$150 for 500 minutes. Wireless information sheets are available at Guest Services, Deck 3, Midship.

Disney Cruise Line



Pre-arranged tours are designed to ensure that you see the best that our ports have to offer. Explore the two nations of St. Maarten on a land tour or take an exhilarating RIB boat ride from the Dutch to the French side.

## SHOPPING



There's something new every day at Mickey's Mates and Treasure Ketch! Be sure to visit our shops often for daily onboard promotions.

### Disney Magic Ship Model

Get an exclusive model of the Disney Magic for \$28.95. Available in Mickey's Mates and Treasure Ketch.

### Disney Dooney and Bourke Bags

Check the exclusive Disney Dooney and Bourke handbags. Available in Treasure Ketch.

## PORT SHOPPING GUIDE

Join Holli for the St. Maarten and St. Thomas Shopping Talk on Sunday at 1:00 p.m. in the Buena Vista Theatre. This event highlights the best shopping in our ports of call.



## FIND YOUR VACATION PARADISE

Visit the Disney Vacation Club desk on Deck 4, Midship, to find out more about the best kept secret. See your daily Personal Navigator for details about our Group Presentations.



## TIME TO SPA AT THE VISTA SPA

Today only, \$20 off any signature treatment plus receive one hour in the Rain Forest Room. Enter our spa raffle for your chance to win up to \$500 of prizes. Drawing at 3:15 p.m. today.

## ONBOARD AIRLINE CHECK IN

If you would like to have your boarding passes printed for you onboard and have your luggage taken to the airport for you, stop by Guest Services to see if you qualify for Onboard Airline Check-in.

From St. Thomas you can enjoy the scenic splendor of St. John or snorkel in the beautiful waters of the U.S.V.I. Our experienced Port Adventures team will help you find the best choices for your family at the Port Adventures Desk, Deck 3 Midship.



Disposable cameras, sundries and sunscreen are available in Treasure Ketch.

## The Time is Right

From Fossil to Skagen, there is a watch just waiting for you at unbelievable saving today in Treasure Ketch. Deck 4, Midship

## Ready for a Magical Adventure?

Get all your sunscreen, sunglasses and much, much more in Treasure Ketch, Deck 4 Midship.

## OPERATING HOURS

Art Gallery	7:00 p.m. - 8:15 p.m.
Disney Vacation Club Desk	5:00 p.m. - 8:00 p.m.
Goofy's Pool	12:30 p.m. - 12:00 mid
Guest Services Desk	24 Hours
Health Center	4:30 p.m. - 7:00 p.m.
Mickey's Mates	6:00 p.m. - 11:00 p.m.
Mickey's Pool	12:30 p.m. - 10:00 p.m.
Mickey's Slide	1:00 p.m. - 3:30 p.m.
	4:30 p.m. - 5:30 p.m.
Mickey's Splash Zone	12:30 p.m. - 8:00 p.m.
Port Adventures Desk	12:00 noon - 3:30 p.m.
	4:30 p.m. - 6:00 p.m.
	7:30 p.m. - 8:30 p.m.
Port Shopping Info	Tune to Channel 223
Preludes (snacks)	5:45 p.m. - 8:30 p.m.
	8:00 p.m. - 8:45 p.m.
Quarter Masters Arcade	12:00 noon - 12:00 mid
Quiet Cove Pool	12:30 p.m. - 12:00 mid
Shutters Photo Gallery	5:30 p.m. - 11:00 p.m.
Treasure Ketch	6:00 p.m. - 11:00 p.m.
Up Beat Duty Free	6:00 p.m. - 11:00 p.m.
Vista Spa Fitness Center	11:30 a.m. - 10:00 p.m.
Vista Spa and Salon	11:30 a.m. - 10:00 p.m.

### Dining Hours

Consumers who order raw or partially cooked, ready-to-eat food of animal origin, are hereby informed that the food is not sufficiently cooked to ensure its safety.

### LUNCH

Goofy's Galley	12:00 noon - 3:30 p.m.
Parrot Cay	Upon boarding - 2:00 p.m.
Pinocchio's Pizzeria	12:00 noon - 6:00 p.m.
Pluto's Dog House	12:00 noon - 6:00 p.m.
Topsider Buffet	12:00 noon - 3:15 p.m.

### DINNER

Animator's Palette*	5:45 p.m. & 8:15 p.m.
Lumifrets*	5:45 p.m. & 8:15 p.m.
Parrot Cay*	5:45 p.m. & 8:15 p.m.
Pluto's Dog House	6:00 p.m. - 10:00 p.m.

\* Pre-arranged seating assignments

### LATE NIGHT SNACKS

Beet Street	11:20 p.m. - 12:00 mid
Ice Cream at Goofy's Galley	6:00 p.m. - 11:00 p.m.
Pinocchio's Pizzeria	9:30 p.m. - 12:00 mid
Promenade Lounge	11:00 p.m. - 11:45 p.m.

### ADDED FEATURES

Beverage Station	24 hours
Room Service	24 hours

### Bar Hours

Bars are solely for adults 18 and older, except during scheduled family events. Adults must be 21 and older to consume alcoholic beverages.

### ON DECK

Cove Cafe	12:00 noon - 12:00 mid
Pinocchio's Pizzeria	12:00 noon - 12:00 mid
Pluto's Dog House	12:00 noon - 6:00 p.m.
Signals	12:00 noon - 9:30 p.m.

### LOUNGES

Preludes	Open during show times
Promenade Lounge	12:00 noon - 12:00 mid
Studio Sea	Open during events only

### BEAT STREET (18 yrs. and older after 9:00 p.m.)

Divisions	12:00 noon - 12:00 mid
Rockin' Bar D	7:00 p.m. - 1:00 a.m.
Sessions (guests 18 and older)	6:00 p.m. - 12:00 mid

DCL1512/0311578 909 ©DISNEY

## IMPORTANT INFORMATION

### Security Notice

All Guests (including Children) who wish to disembark or embark the ship are required to present their Key to the World card at the gangway. A photo ID is also required for those Guests who are 18 years of age or older. Guests under the age of 18 are required to have a Parent, Guardian or other responsible adult sign an authorization form at the time it is given out if they wish to go ashore unaccompanied. Authorization forms are available at the gangways and Guest Services.

### Cold and Flu Reminder

Please wash hands frequently and thoroughly, particularly before meals. Contact the Health Center by dialing 7-1923, should anyone in your party become ill.

### Corridor Quiet Hours

As a courtesy to all our Guests, please recognize quiet hallway hours from 10:00 p.m. til 8:00 a.m.

### Inclement Weather

For the safety of all Guests, outdoor events may be changed due to unforeseen weather conditions.

### Environmental Message

With Disney's commitment to the Environment please refrain from throwing anything over the Ship's side. Thank you.

### No Reserved Seats Policy

As a courtesy to all Guests we kindly advise that the saving of seats is not permitted in the Walt Disney Theatre, and the saving of the sun loungers is not permitted on Deck 9 and 10. Items left unattended will be returned to lost and found at Guest Services Deck 3 Midship.

### Smoking

For the comfort of our guests the following areas are designated as Smoking areas: Open decks on the Starboard Side (excluding Mickey Pool area). Smoking is not permitted on Deck 4, Starboard from 6:00am to 6:00pm. Smoking is prohibited in all guest staterooms. Guests found smoking in their staterooms will be charged a \$250 stateroom recovery fee.

### Walt Disney Theatre

Theatrical performances may use artificial fog, strobe lights, pyrotechnics and other special effects. For the safety of our performers and the comfort of those around you, the use of flash photography and video recording is prohibited.

### Verandah Safety

Please do not leave any combustible materials on your balcony when not present in your stateroom for safety reasons.